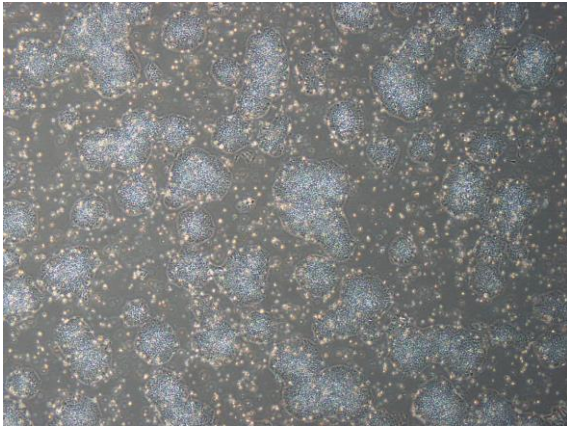
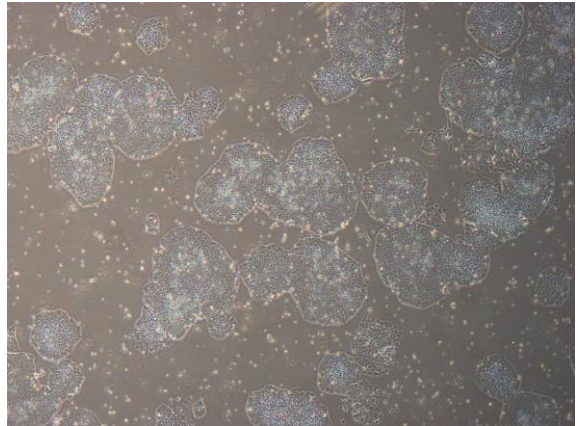


## 【 CiRA-j-1611 】 Morphology of iPSC colonies

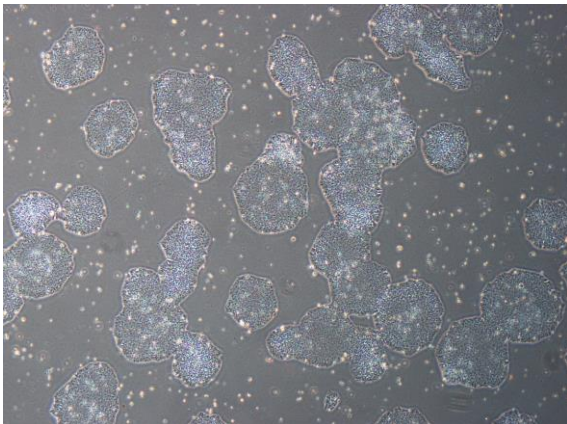
CiRA-j-1611-A: passage-3



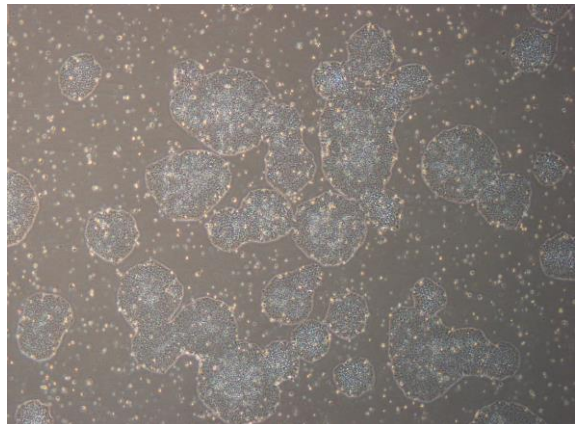
CiRA-j-1611-B: passage-3



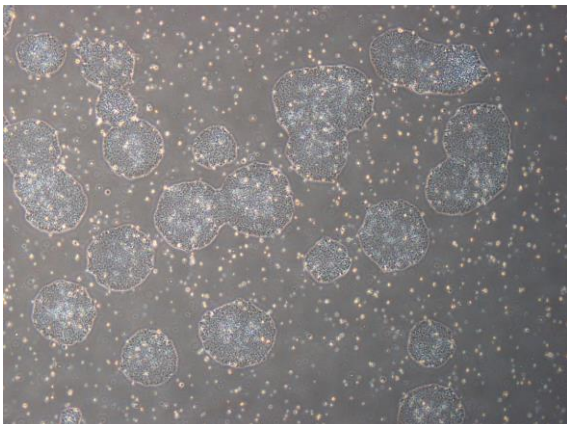
CiRA-j-1611-C: passage-3



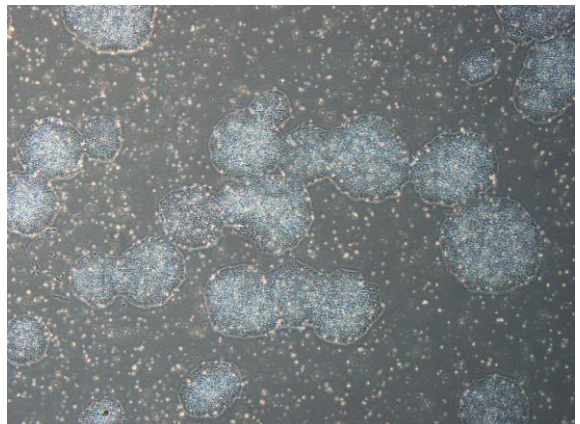
CiRA-j-1611-D: passage-3



CiRA-j-1611-E: passage-3



CiRA-j-1611-F: passage-3



( All images were captured at 4x magnification )